



2008
ROMAN SHADES PRICE GUIDE



The West Lake Collection
Naturally Beautiful



Table of Contents

3	Natural Woven Materials Reference Table
4	Edge Binding Color Reference
4	Wood Bar Color Reference
4	Liner Color Reference
5	Shade Styles
5	No Charge Options
6	Extra Charge Options
7	Standard Shade Pricing
8	Twin Shade Pricing Privacy Liner
9	Twin Shade Pricing Black-Out Liner
10	Shade Surcharge Option Pricing
11	Specifications
12	Warranty Information

Natural Woven Materials Reference

PATTERN NAME	COLOR	NUMBER	PRICE GROUP	EDGE BINDING	WOOD BAR	RECOMMENDED WOOD BAR COLOR	FOLDING DOOR & DRAPERY
Abaca	Brown	WL 7230B	C	Y	Y	Walnut/WB03	N
Acacia	Natural	WL 5077N	A	Y	Y	Natural/WB06	Y
Akita	Carbon	WL 3100R	C	Y	Y	Sugar Maple/WB15	Y
Akita	Cherry	WL 3060C	C	Y	Y	Spice/WB10	Y
Akita	Gold	WL 3080G	C	Y	Y	Sugar Maple/WB15	Y
Akita	Hazelnut	WL 3030H	C	Y	Y	Espresso/WB14	Y
Akita	Oak	WL 3010K	C	Y	Y	Walnut/WB03	Y
Akita	Walnut	WL 3050W	C	Y	Y	Walnut/WB03	Y
Alina	Natural	WL 1020N	B	Y	Y	Natural/WB06	Y
Aurora	Cherry	WL 3200C	B	Y	Y	Spice/WB10	Y
Aurora	Walnut	WL 5186W	B	Y	Y	Walnut/WB03	Y
Bamboo Palm	Carbon	WL 4100R	C	Y	Y	Driftwood/WB05	Y
Bamboo Reeds	Wheat	WL 2040W	B	N	Y	Natural/WB06	N
Bamboo Weave	Camel	WL 2060C	B	N	Y	Sugar Maple/WB15	N
Borneo	Dappled	WL 7291D	B	Y	Y	Sugar Maple/WB15	Y
Calypso	Spring	WL 7231S	C	Y	Y	Sugar Maple/WB15	Y
Chibo	Natural	WL 1162N	A	Y	Y	Natural/WB06	Y
Driftwood	Natural	WL 5068N	A	Y	Y	Natural/WB06	Y
Harmony	Natural	WL 4970N	D	Y [REC]*	Y	Natural/WB06	N
Harmony	Spice	WL 4970S	D	Y [REC]*	Y	Walnut/WB03	N
Madras	Sesame	WL 2530S	D	Y	Y	Sugar Maple/WB15	Y
Mandalay	Oak	WL 5087K	A	Y	Y	Sugar Maple/WB15	Y
Mandalay	Pistachio	WL 5052P	A	Y	Y	Natural/WB06	Y
Medan	Carmel	WL 5056C	A	Y	Y	Sugar Maple/WB15	N
Monsoon	Sand	WL 3910S	D	Y	Y	Natural/WB06	N
Nikko	Autumn	WL 5174A	B	Y	Y	Natural/WB06	Y
Nikko	Summer	WL 5174S	B	Y	Y	Natural/WB06	Y
Nocturne	Ebony	WL 5186E	B	Y	Y	Natural/WB06	Y
Parchment	Bleached	WL 7253B	C	Y [REC]*	Y	Natural/WB06	N
Parchment	Sunset	WL 1206S	C	Y [REC]*	Y	Sugar Maple/WB15	N
Prairie	Natural	WL 7249N	D	Y [REC]*	Y	Driftwood/WB05	N
Prairie	Russet	WL 7254R	D	Y [REC]*	Y	Spice/WB10	N
Prairie	Tan	WL 7250T	D	Y [REC]*	Y	Sugar Maple/WB15	N
Raffia	Bark	WL 7252B	D	Y [REC]*	Y	Walnut/WB03	N
Raffia	Sand	WL 7252S	D	Y [REC]*	Y	Natural/WB06	N
River Cane	Sage	WL 5016S	D	Y	Y	Sugar Maple/WB15	Y
Rustic	Saddle	WL 1003S	B	Y	Y	Sugar Maple/WB15	Y
Sakura	Beige	WL 5052B	D	Y	Y	Sugar Maple/WB15	Y
Savanna	Nightshade	WL 7415N	D	Y [REC]*	Y	Espresso/WB14	N
Sedona	Tan	WL 7290T	C	Y	Y	Sugar Maple/WB15	Y
Sisal	Natural	WL 5151N	D	Y	Y	Driftwood/WB05	Y
Sumatra	Espresso	WL 5002E	B	Y	Y	Espresso/WB14	N
Sumatra	Saddle	WL 5002S	B	Y	Y	Walnut/WB03	N
Sun Shade	Brown	WL 5049B	B	Y	Y	Walnut/WB03	Y
Sun Shade	Natural	WL 5049N	B	Y	Y	Natural/WB06	Y
Sun Shade	White	WL 5049W	C	Y	Y	Natural/WB06	N
Sunflower	Gold	WL 5106G	A	Y	Y	Sugar Maple/WB15	Y
Tamarind	Brown	WL 7248B	C	Y	Y	Spice/WB10	Y
Tropical Wood	Balsa	WL 1167B	B	Y	Y	Natural/WB06	Y
Tropical Wood	Maroon	WL 1167M	B	Y	Y	Spice/WB10	Y
Woodweave	Natural	WL 8028N	D	Y	Y	Natural/WB06	Y

* Edge bindings recommended to protect more delicate patterns, if they are to be subject to heavy use or wear and tear.

Color Reference

Edge Binding Color Reference

FABRIC COLOR NAME	COLOR NUMBER
Ecu	EB1
Beige	EB2
Mocha	EB3
Camel	EB4
Sage	EB5
Chocolate	EB6
Harbor Grey	EB7
Smoke	EB8
Leaf Green	EB9
Black	EB10
Brick	EB11
Raspberry	EB12



Wood Bar Color Reference

WOOD BAR COLOR NAME	COLOR NUMBER
Walnut	WB03
Driftwood	WB05
Natural	WB06
Spice	WB10
Espresso	WB14
Sugar Maple	WB15

Liner Color Reference

LINER COLOR NAME	COLOR NUMBER
Privacy Natural	FL4
Privacy Beige	FL8
Black-Out Soft White	FL9



Shade Styles

1] Standard Roman Shade

Shade is raised by means of cords, which hang in front of the shade. Includes a 6-inch valance to conceal the components. When raised, the material rises from the bottom in flat folds.



1] Standard

2] Waterfall Shade

Shade is raised by means of cords, which hang behind the shade. Material is attached to the front of the head rail, without a valance. When raised, the material rises from the bottom in flat folds.



2] Waterfall
Shown with optional wood bottom bar.

3] Twin Shade

Features two separate, independently operated shades on one head rail. The front shade is a waterfall shade in natural woven material, attached to the front of the head rail.

A separate liner shade is attached to the back of the head rail. Both shades operate independently with lift cords on opposite sides and behind the front shade.



3] Twin Shade
Shown with optional wood bottom bar.

No Charge Options

- Valance returns with all outside mount shades
- Hold down brackets supplied upon request (not available with wood bottom bar)
- Lift cord position – left or right

Extra Charge Options

Edge Binding

Check **Materials Reference** for availability with each pattern.

Fabric Edge Binding, 1 ½ inches in width, will be applied to the sides of the shade and valance (if applicable) and across the bottom of the shade.

Not available with Wood Bottom Bar.

See **Surcharge Chart** for Pricing.

Liners

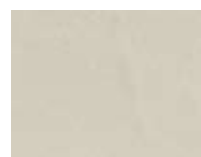
Available in Privacy or Black-Out liner.

Available with Wood Bottom Bar and Edge Binding.

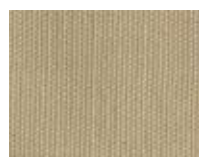
Liners are secured to the back of the shade by stitches at each side of the liner.

See **Surcharge Chart** for Pricing.

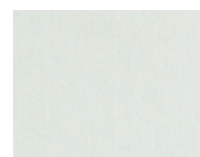
Liner Colors:



FL4 Privacy Natural



FL8 Privacy Beige



FL9 Black-Out Soft White

Top Down Bottom Up Shade

Shade can be raised from the bottom or lowered from the top, by two sets of cords on opposite sides of the shade. Includes a 6-inch valance to conceal the components. When raised, the material rises from the bottom in flat folds. Features a coordinating stained wood bar where the cords are secured to the top of the shade.

Available with Liners, Wood Bottom Bars and Edge Bindings.

Top and Bottom Wood Bars will be matched.



Top Down Bottom Up

Wood Bottom Bar

Available with all patterns and up to 96" wide.

Not available with Edge Binding.

Select your own color, or choose our recommended color to coordinate with your shade fabric. Tassels will be coordinated to the pattern and cords, not to the Wood Bar.

Wood Bar Colors:



Walnut



Driftwood



Natural



Spice



Espresso



Sugar Maple

Standard Shade Pricing

Includes Standard Roman Shade and Waterfall Shade

		WIDTH									
		24"	30"	36"	42"	48"	60"	72"	84"	96"	
Price Group A	LENGTH	36"	\$94	\$119	\$145	\$162	\$180	\$222	\$250	\$291	\$320
		48"	\$132	\$152	\$171	\$194	\$214	\$267	\$299	\$350	\$386
		54"	\$141	\$171	\$185	\$207	\$234	\$290	\$330	\$378	\$421
		60"	\$149	\$178	\$200	\$222	\$244	\$309	\$362	\$406	\$456
		66"	\$157	\$185	\$214	\$237	\$263	\$353	\$389	\$448	\$504
		72"	\$165	\$196	\$228	\$253	\$279	\$369	\$410	\$491	\$551
		78"	\$176	\$209	\$242	\$273	\$304	\$392	\$444	\$520	\$586
		84"	\$186	\$222	\$257	\$291	\$330	\$415	\$468	\$551	\$628
		90"	\$195	\$233	\$271	\$307	\$345	\$449	\$522	\$594	\$675
		96"	\$204	\$245	\$286	\$324	\$362	\$473	\$542	\$632	\$720

		WIDTH									
		24"	30"	36"	42"	48"	60"	72"	84"	96"	
Price Group B	LENGTH	36"	\$128	\$155	\$182	\$198	\$214	\$250	\$285	\$335	\$381
		48"	\$170	\$196	\$222	\$244	\$266	\$303	\$342	\$406	\$475
		54"	\$177	\$207	\$236	\$261	\$285	\$328	\$371	\$441	\$510
		60"	\$186	\$218	\$250	\$277	\$303	\$353	\$400	\$475	\$545
		66"	\$196	\$231	\$265	\$294	\$323	\$377	\$430	\$507	\$579
		72"	\$206	\$243	\$280	\$311	\$342	\$400	\$460	\$539	\$612
		78"	\$215	\$255	\$295	\$329	\$362	\$425	\$489	\$570	\$648
		84"	\$224	\$267	\$309	\$345	\$381	\$450	\$518	\$601	\$683
		90"	\$235	\$280	\$324	\$362	\$400	\$485	\$560	\$648	\$733
		96"	\$245	\$292	\$338	\$379	\$419	\$520	\$602	\$694	\$783

		WIDTH									
		24"	30"	36"	42"	48"	60"	72"	84"	96"	
Price Group C	LENGTH	36"	\$157	\$181	\$204	\$217	\$243	\$301	\$351	\$429	\$494
		48"	\$177	\$206	\$234	\$252	\$270	\$349	\$407	\$492	\$582
		54"	\$189	\$220	\$251	\$272	\$292	\$369	\$446	\$536	\$614
		60"	\$201	\$234	\$267	\$290	\$319	\$401	\$470	\$563	\$661
		66"	\$213	\$248	\$282	\$307	\$342	\$433	\$510	\$609	\$708
		72"	\$224	\$261	\$297	\$324	\$361	\$471	\$554	\$660	\$765
		78"	\$236	\$275	\$314	\$349	\$392	\$499	\$586	\$698	\$810
		84"	\$247	\$289	\$330	\$373	\$415	\$526	\$618	\$735	\$855
		90"	\$258	\$302	\$346	\$391	\$435	\$562	\$659	\$781	\$908
		96"	\$269	\$316	\$362	\$409	\$463	\$597	\$710	\$834	\$961

		WIDTH									
		24"	30"	36"	42"	48"	60"	72"	84"	96"	
Price Group D	LENGTH	36"	\$188	\$216	\$243	\$260	\$276	\$351	\$409	\$497	\$586
		48"	\$214	\$242	\$281	\$303	\$325	\$413	\$484	\$583	\$682
		54"	\$227	\$268	\$309	\$329	\$349	\$442	\$521	\$625	\$732
		60"	\$240	\$289	\$327	\$355	\$373	\$472	\$558	\$668	\$780
		66"	\$254	\$301	\$347	\$372	\$397	\$509	\$600	\$730	\$850
		72"	\$268	\$312	\$356	\$389	\$422	\$566	\$666	\$793	\$919
		78"	\$279	\$327	\$375	\$471	\$459	\$598	\$704	\$838	\$972
		84"	\$295	\$344	\$394	\$445	\$496	\$630	\$742	\$880	\$1025
		90"	\$309	\$362	\$414	\$467	\$520	\$679	\$819	\$972	\$1126
		96"	\$323	\$379	\$434	\$476	\$545	\$729	\$858	\$1019	\$1179

Twin Shade Shade Pricing | Privacy Liner

		WIDTH									
		24"	30"	36"	42"	48"	60"	72"	84"	96"	
Price Group A Acacia Chibo Driftwood Mandalay Medan Sunflower	LENGTH	36"	\$160	\$186	\$213	\$239	\$279	\$339	\$412	\$466	\$519
		48"	\$173	\$200	\$226	\$266	\$306	\$372	\$440	\$519	\$559
		54"	\$186	\$213	\$247	\$293	\$346	\$419	\$495	\$577	\$660
		60"	\$200	\$229	\$275	\$321	\$379	\$452	\$550	\$641	\$733
		66"	\$213	\$252	\$302	\$353	\$403	\$499	\$605	\$705	\$806
		72"	\$226	\$275	\$330	\$385	\$440	\$550	\$660	\$769	\$879
		78"	\$239	\$298	\$357	\$417	\$476	\$595	\$715	\$834	\$953
		84"	\$259	\$321	\$385	\$449	\$513	\$632	\$769	\$898	\$1026
		90"	\$273	\$339	\$412	\$481	\$539	\$678	\$824	\$962	\$1099
		96"	\$293	\$359	\$439	\$513	\$559	\$705	\$879	\$1037	\$1197

		WIDTH									
		24"	30"	36"	42"	48"	60"	72"	84"	96"	
Price Group B Alina Aurora Bamboo Reeds Bamboo Weave Borneo Nikko Nocturne Rustic Sumatra Sunshade Stains Tropical Wood	LENGTH	36"	\$179	\$227	\$268	\$316	\$358	\$447	\$537	\$632	\$710
		48"	\$197	\$245	\$286	\$340	\$382	\$471	\$561	\$668	\$752
		54"	\$233	\$268	\$310	\$364	\$400	\$495	\$591	\$698	\$800
		60"	\$257	\$286	\$334	\$382	\$436	\$519	\$621	\$734	\$841
		66"	\$274	\$310	\$358	\$406	\$459	\$550	\$668	\$782	\$895
		72"	\$292	\$328	\$382	\$430	\$483	\$600	\$728	\$847	\$960
		78"	\$310	\$346	\$400	\$455	\$520	\$650	\$780	\$910	\$1040
		84"	\$328	\$364	\$424	\$490	\$560	\$700	\$847	\$980	\$1120
		90"	\$346	\$382	\$450	\$525	\$600	\$750	\$900	\$1050	\$1200
		96"	\$364	\$406	\$480	\$560	\$640	\$800	\$960	\$1120	\$1280

		WIDTH									
		24"	30"	36"	42"	48"	60"	72"	84"	96"	
Price Group C Abaca Akita Bamboo Palm Calypso Parchment Sedona Sunshade White Tamarind	LENGTH	36"	\$182	\$225	\$268	\$300	\$337	\$418	\$509	\$594	\$675
		48"	\$203	\$246	\$284	\$321	\$359	\$439	\$541	\$621	\$723
		54"	\$225	\$268	\$305	\$343	\$391	\$461	\$566	\$661	\$755
		60"	\$241	\$289	\$321	\$367	\$419	\$503	\$616	\$718	\$839
		66"	\$257	\$305	\$346	\$404	\$461	\$557	\$664	\$807	\$923
		72"	\$278	\$327	\$377	\$440	\$503	\$600	\$739	\$881	\$1007
		78"	\$295	\$348	\$409	\$477	\$545	\$664	\$814	\$954	\$1091
		84"	\$311	\$367	\$440	\$514	\$578	\$707	\$881	\$1028	\$1174
		90"	\$327	\$393	\$466	\$546	\$610	\$771	\$944	\$1101	\$1258
		96"	\$343	\$419	\$493	\$578	\$643	\$803	\$1007	\$1174	\$1342

		WIDTH									
		24"	30"	36"	42"	48"	60"	72"	84"	96"	
Price Group D Harmony Madras Monsoon Prairie Raffia River Cane Sakura Savanna Sisal Woodweave	LENGTH	36"	\$200	\$229	\$264	\$309	\$344	\$419	\$494	\$574	\$648
		48"	\$219	\$249	\$288	\$344	\$384	\$464	\$554	\$671	\$767
		54"	\$239	\$269	\$309	\$374	\$431	\$519	\$638	\$755	\$863
		60"	\$259	\$284	\$329	\$409	\$474	\$569	\$719	\$839	\$959
		66"	\$279	\$304	\$349	\$434	\$504	\$628	\$791	\$923	\$1055
		72"	\$309	\$329	\$364	\$464	\$539	\$688	\$863	\$1007	\$1151
		78"	\$329	\$349	\$389	\$524	\$589	\$758	\$935	\$1091	\$1246
		84"	\$354	\$369	\$419	\$579	\$638	\$818	\$1007	\$1175	\$1342
		90"	\$374	\$394	\$459	\$618	\$673	\$868	\$1079	\$1258	\$1438
		96"	\$394	\$419	\$489	\$648	\$718	\$943	\$1151	\$1342	\$1534

Twin Shade Shade Pricing | Black-Out Liner

		WIDTH									
		24"	30"	36"	42"	48"	60"	72"	84"	96"	
Price Group A Acacia Chibo Driftwood Mandalay Medan Sunflower	LENGTH	36"	\$172	\$201	\$230	\$259	\$302	\$366	\$445	\$503	\$560
		48"	\$187	\$215	\$244	\$287	\$330	\$402	\$475	\$560	\$603
		54"	\$201	\$230	\$267	\$316	\$373	\$452	\$534	\$623	\$712
		60"	\$215	\$247	\$297	\$346	\$409	\$488	\$594	\$693	\$791
		66"	\$230	\$272	\$326	\$381	\$435	\$539	\$653	\$762	\$871
		72"	\$244	\$297	\$356	\$416	\$475	\$594	\$712	\$831	\$950
		78"	\$259	\$322	\$386	\$450	\$514	\$643	\$772	\$900	\$1029
		84"	\$280	\$346	\$416	\$485	\$554	\$682	\$831	\$970	\$1108
		90"	\$294	\$366	\$445	\$519	\$582	\$733	\$890	\$1039	\$1187
		96"	\$316	\$388	\$474	\$554	\$603	\$761	\$950	\$1120	\$1293

		WIDTH									
		24"	30"	36"	42"	48"	60"	72"	84"	96"	
Price Group B Alina Aurora Bamboo Reeds Bamboo Weave Borneo Nikko Nocturne Rustic Sumatra Sunshade Stains Tropical Wood	LENGTH	36"	\$193	\$245	\$290	\$342	\$387	\$483	\$580	\$683	\$767
		48"	\$213	\$264	\$309	\$367	\$412	\$509	\$606	\$722	\$812
		54"	\$251	\$290	\$335	\$393	\$432	\$535	\$638	\$754	\$863
		60"	\$277	\$309	\$361	\$412	\$470	\$561	\$670	\$793	\$909
		66"	\$296	\$335	\$387	\$438	\$496	\$594	\$722	\$844	\$967
		72"	\$316	\$354	\$412	\$464	\$522	\$648	\$786	\$915	\$1036
		78"	\$335	\$374	\$432	\$491	\$561	\$702	\$842	\$982	\$1123
		84"	\$354	\$393	\$458	\$529	\$605	\$756	\$915	\$1058	\$1209
		90"	\$374	\$412	\$486	\$567	\$648	\$810	\$972	\$1134	\$1296
		96"	\$393	\$438	\$518	\$605	\$691	\$864	\$1036	\$1209	\$1382

		WIDTH									
		24"	30"	36"	42"	48"	60"	72"	84"	96"	
Price Group C Abaca Akita Bamboo Palm Calypso Parchment Sedona Sunshade White Tamarind	LENGTH	36"	\$197	\$243	\$289	\$324	\$364	\$451	\$549	\$642	\$729
		48"	\$220	\$266	\$307	\$347	\$387	\$474	\$584	\$671	\$781
		54"	\$243	\$289	\$330	\$370	\$422	\$497	\$612	\$713	\$815
		60"	\$260	\$312	\$347	\$396	\$453	\$544	\$665	\$775	\$906
		66"	\$278	\$330	\$374	\$436	\$498	\$601	\$717	\$872	\$997
		72"	\$301	\$353	\$408	\$476	\$544	\$648	\$798	\$951	\$1087
		78"	\$318	\$376	\$442	\$515	\$589	\$717	\$879	\$1031	\$1178
		84"	\$335	\$396	\$476	\$555	\$625	\$763	\$951	\$1110	\$1268
		90"	\$353	\$425	\$503	\$590	\$659	\$833	\$1019	\$1189	\$1359
		96"	\$370	\$453	\$532	\$625	\$694	\$868	\$1087	\$1268	\$1450

		WIDTH									
		24"	30"	36"	42"	48"	60"	72"	84"	96"	
Price Group D Harmony Madras Monsoon Prairie Raffia River Cane Sakura Savanna Sisal Woodweave	LENGTH	36"	\$215	\$248	\$285	\$334	\$372	\$452	\$533	\$619	\$700
		48"	\$237	\$269	\$311	\$372	\$414	\$501	\$598	\$725	\$828
		54"	\$259	\$291	\$334	\$404	\$466	\$560	\$689	\$815	\$932
		60"	\$280	\$307	\$356	\$442	\$512	\$614	\$777	\$906	\$1036
		66"	\$302	\$329	\$377	\$469	\$544	\$679	\$854	\$997	\$1139
		72"	\$334	\$356	\$393	\$501	\$582	\$743	\$932	\$1087	\$1243
		78"	\$356	\$377	\$420	\$566	\$636	\$819	\$1010	\$1178	\$1346
		84"	\$382	\$399	\$452	\$625	\$689	\$883	\$1087	\$1268	\$1450
		90"	\$404	\$426	\$496	\$668	\$727	\$937	\$1165	\$1359	\$1553
		96"	\$426	\$452	\$528	\$700	\$776	\$1018	\$1243	\$1450	\$1657

Shade Surcharge Option Pricing

Add the surcharge below to the retail price for the basic shade.

		WIDTH									
		24"	30"	36"	42"	48"	60"	72"	84"	96"	
Edge Binding Ecru Beige Mocha Camel Sage Chocolate Harbor Grey Smoke Leaf Green Black Brick Raspberry	LENGTH	36"	\$17	\$21	\$26	\$30	\$34	\$43	\$51	\$60	\$68
		48"	\$23	\$28	\$34	\$40	\$46	\$57	\$68	\$80	\$91
		54"	\$26	\$32	\$38	\$45	\$51	\$64	\$77	\$90	\$102
		60"	\$28	\$36	\$43	\$50	\$57	\$71	\$85	\$100	\$114
		66"	\$31	\$39	\$47	\$55	\$63	\$78	\$94	\$110	\$125
		72"	\$34	\$43	\$51	\$60	\$68	\$85	\$102	\$119	\$137
		78"	\$37	\$46	\$55	\$65	\$74	\$92	\$111	\$129	\$148
		84"	\$40	\$50	\$60	\$70	\$80	\$100	\$119	\$139	\$159
		90"	\$43	\$53	\$64	\$75	\$85	\$107	\$128	\$149	\$171
		96"	\$46	\$57	\$68	\$80	\$91	\$114	\$137	\$159	\$182

		WIDTH									
		24"	30"	36"	42"	48"	60"	72"	84"	96"	
Privacy Liner Privacy Natural Privacy Beige	LENGTH	36"	\$28	\$35	\$42	\$49	\$56	\$70	\$84	\$98	\$112
		48"	\$37	\$47	\$56	\$65	\$75	\$93	\$112	\$131	\$149
		54"	\$42	\$53	\$63	\$74	\$84	\$105	\$126	\$147	\$168
		60"	\$47	\$58	\$70	\$82	\$93	\$117	\$140	\$163	\$187
		66"	\$51	\$64	\$77	\$90	\$103	\$128	\$154	\$180	\$205
		72"	\$56	\$70	\$84	\$98	\$112	\$140	\$168	\$196	\$224
		78"	\$61	\$76	\$91	\$106	\$121	\$152	\$182	\$212	\$243
		84"	\$65	\$82	\$98	\$114	\$131	\$163	\$196	\$229	\$261
		90"	\$70	\$88	\$105	\$123	\$140	\$175	\$210	\$245	\$280
		96"	\$75	\$93	\$112	\$131	\$149	\$187	\$224	\$261	\$299

		WIDTH									
		24"	30"	36"	42"	48"	60"	72"	84"	96"	
Black-Out Liner Black-Out Soft White	LENGTH	36"	\$36	\$45	\$54	\$63	\$72	\$90	\$108	\$126	\$144
		48"	\$48	\$60	\$72	\$84	\$96	\$120	\$144	\$168	\$192
		54"	\$54	\$68	\$81	\$95	\$108	\$135	\$162	\$189	\$216
		60"	\$60	\$75	\$90	\$105	\$120	\$150	\$180	\$210	\$240
		66"	\$66	\$83	\$99	\$116	\$132	\$165	\$198	\$231	\$264
		72"	\$72	\$90	\$108	\$126	\$144	\$180	\$216	\$252	\$288
		78"	\$78	\$98	\$117	\$137	\$156	\$195	\$234	\$273	\$312
		84"	\$84	\$105	\$126	\$147	\$168	\$210	\$252	\$294	\$336
		90"	\$90	\$113	\$135	\$158	\$180	\$225	\$270	\$315	\$360
		96"	\$96	\$120	\$144	\$168	\$192	\$240	\$288	\$336	\$384

Wood Bottom Bar	WIDTH								
	24"	30"	36"	42"	48"	60"	72"	84"	96"
	\$13	\$16	\$18	\$20	\$22	\$27	\$31	\$36	\$40

Top Down Bottom Up

SURCHARGE FOR ALL SIZES: \$35

Specifications

Size Limitations

Minimum Width: 18 inches
Maximum Width: 96 inches

Minimum Height: 18 inches
Maximum Height: 96 inches

Inside Mount Depth

Inside mount depths depend upon the thickness of the fabric and also whether a liner is being used. However, the following depths are calculated to accommodate the thickest patterns.

Minimum Required Depth:
Waterfall Shades: ¾ inch
All other styles: 1 inch

Flush Mount Depth:
Waterfall Shades: 1 ¾ inches
All other styles: 2 inches

Head Rail Dimensions

Depth: 1 ½ inches
Height: ¾ inch

Middle support brackets will be supplied for all shades over 42 inches wide.

Bracket Dimensions

Height: 1 ½ inches
Depth: 1 ¾ inches

Inside Mount Deductions

The factory will make a deduction of 3/8 inch for all Inside Mount shades, unless otherwise requested.

Wood Bottom Bar Dimensions

Height: 1 inch
Depth: ½ inch

Material is inserted into groove in the top of the wood bottom bar.



One Year Limited Warranty

What is covered by this warranty and for how long:

For a period of one (1) year from the date of purchase, all products are warranted against defects in materials and workmanship provided that the product is installed according to the product instructions. We reserve the right to determine if your piece warrants a repair or partial replacement of any parts or in the unlikely event the entire piece is defective, we will replace this window covering with a new window covering of equal or superior value. This shall be your sole remedy under this warranty.

Who is covered by this warranty:

This warranty applies to the original customer with proof of purchase in a residential application within the United States.

What is not covered in this warranty:

This warranty does not cover removal or installation or reinstallation of any window covering. This warranty does not cover damage or defects caused by or resulting from improper maintenance, neglect or improper use, abuse, misuse, neglect, accidents, Acts of God, alteration, commercial use, installation, removal or reinstallation or exposure to excessive moisture.

Your rights under State Law:

This warranty gives you the specific legal rights. You may also have other rights which may vary from state to state. We will not be liable for **INCIDENTAL OR CONSEQUENTIAL DAMAGES** or for any other direct or indirect damage, loss, cost, expense or fee. Some states do not allow the exclusion or limitation of incidental or consequential damages, so the above limitation or exclusion may not apply to you.

THIS WARRANTY IS EXCLUSIVE AND IN LIEU OF ALL OTHER OBLIGATIONS, LIABILITIES, OR WARRANTIES.